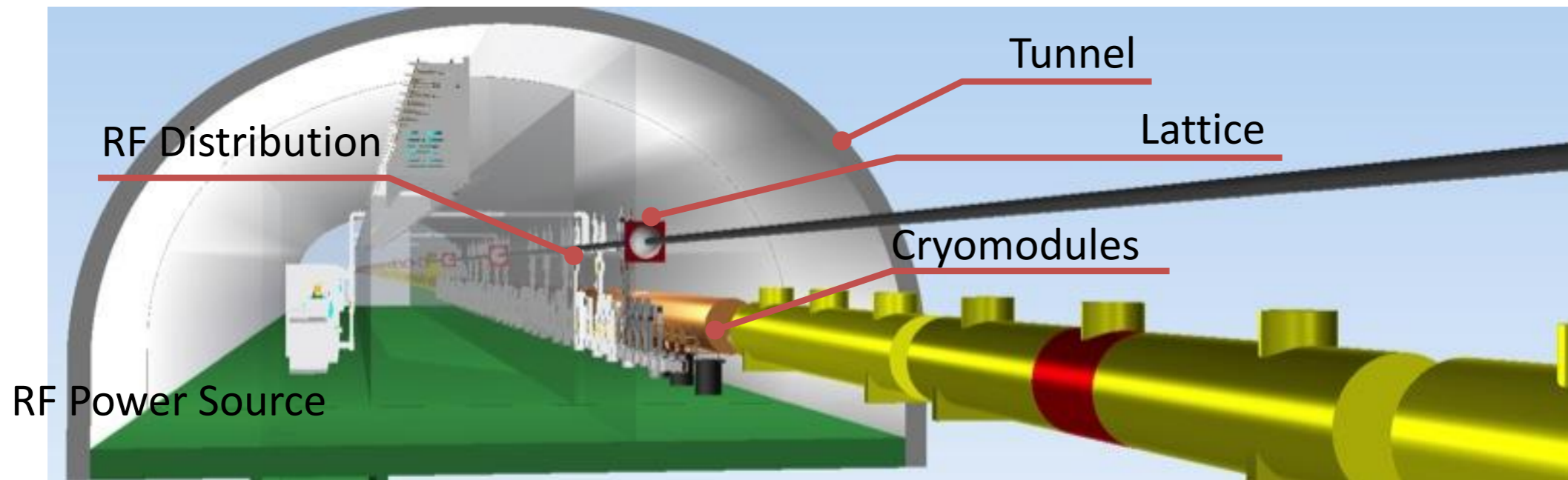
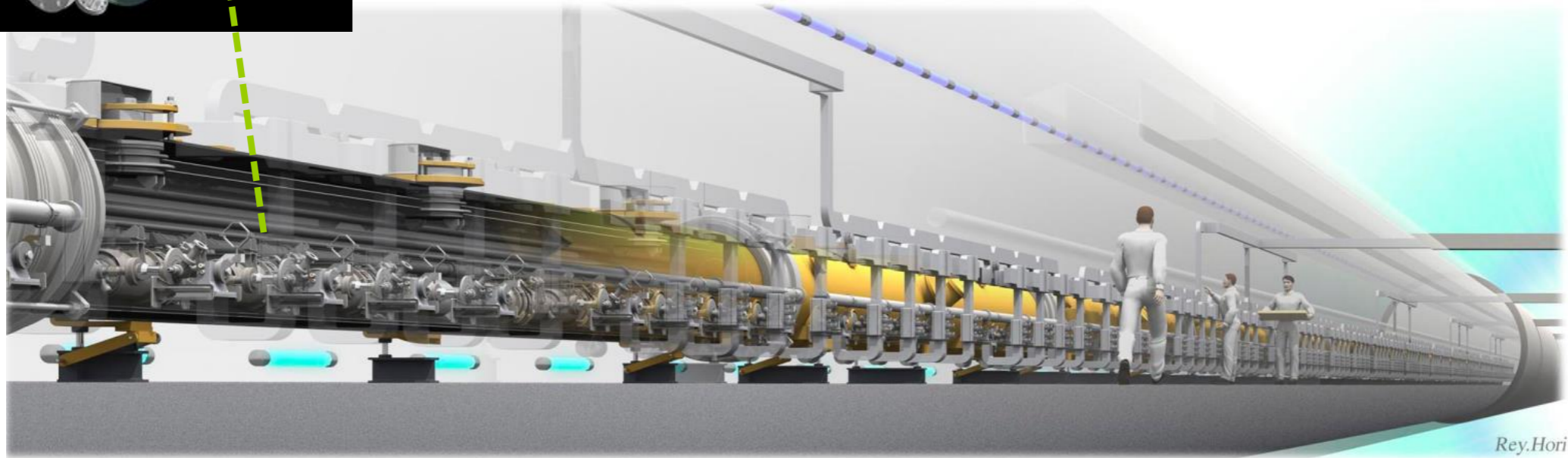
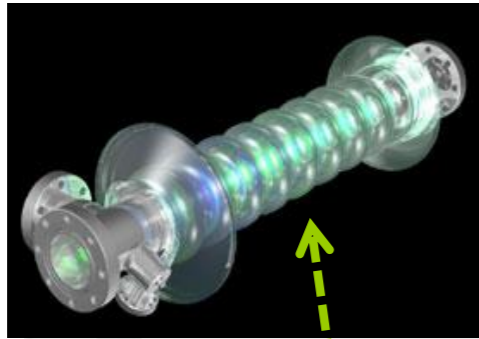


# of SRF cavities 16000

# Main Linac at the ILC



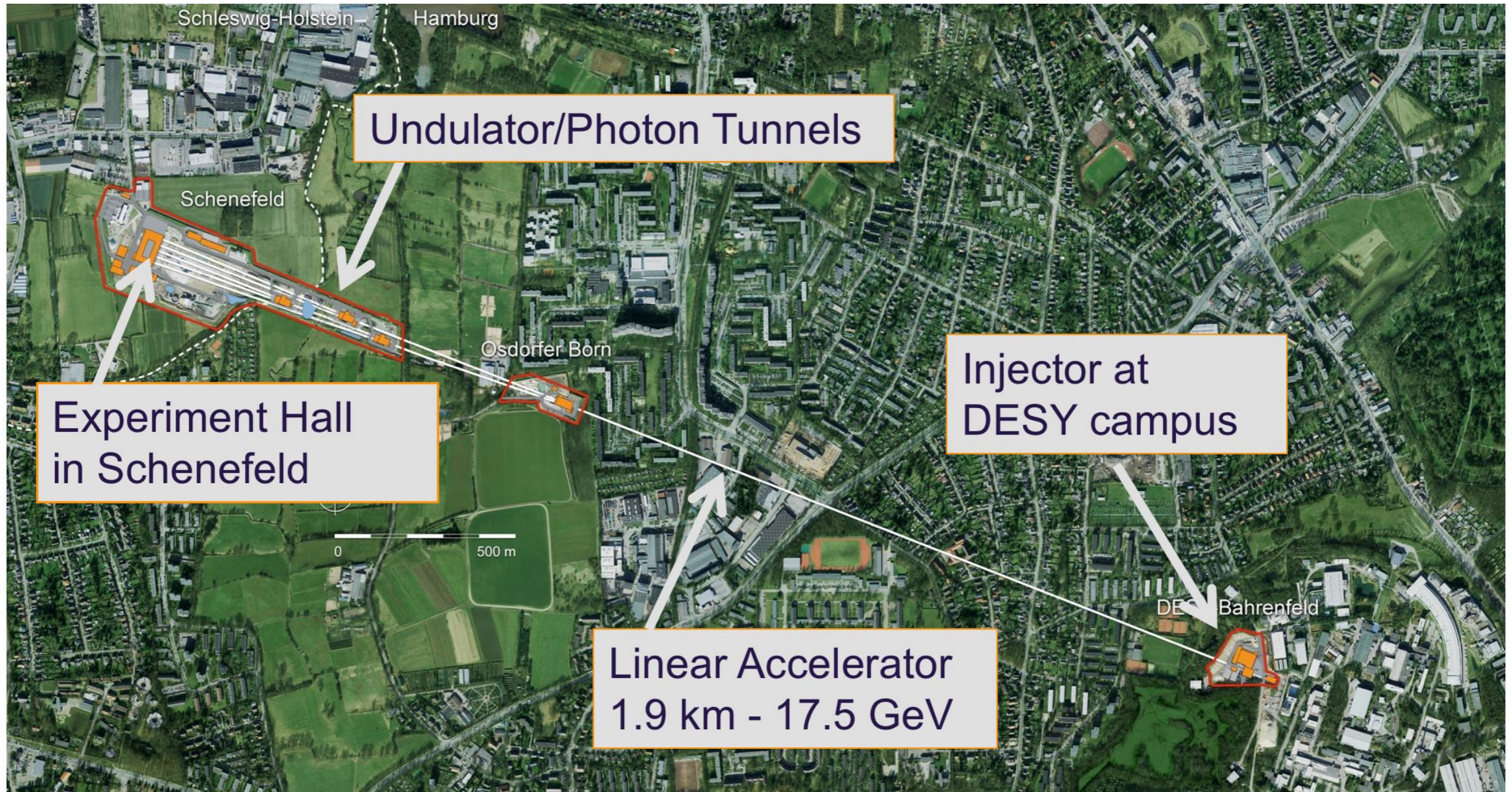
Shin Michizono, ILC detector meeting (Oct.13, 2017, KEK )

# ILC Prototype

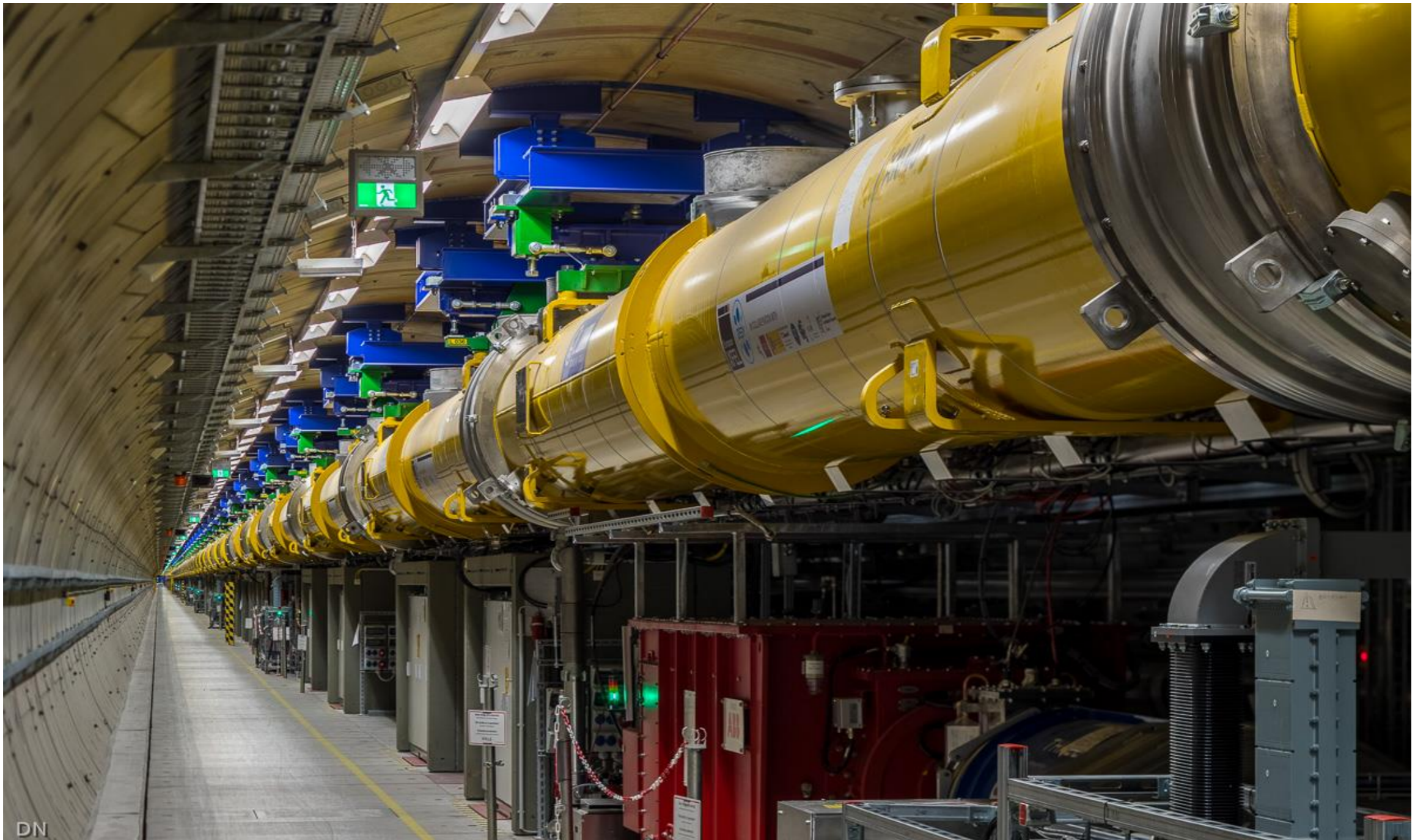
# of SRF cavities 800

$\therefore$  1/20 of ILC

## European XFEL: Layout



# European XFEL: View along L3 accelerator section



DN

# ILC-TDR Value estimation based on prototypes

ILCU is defined as equal to the USD on January 1, 2012

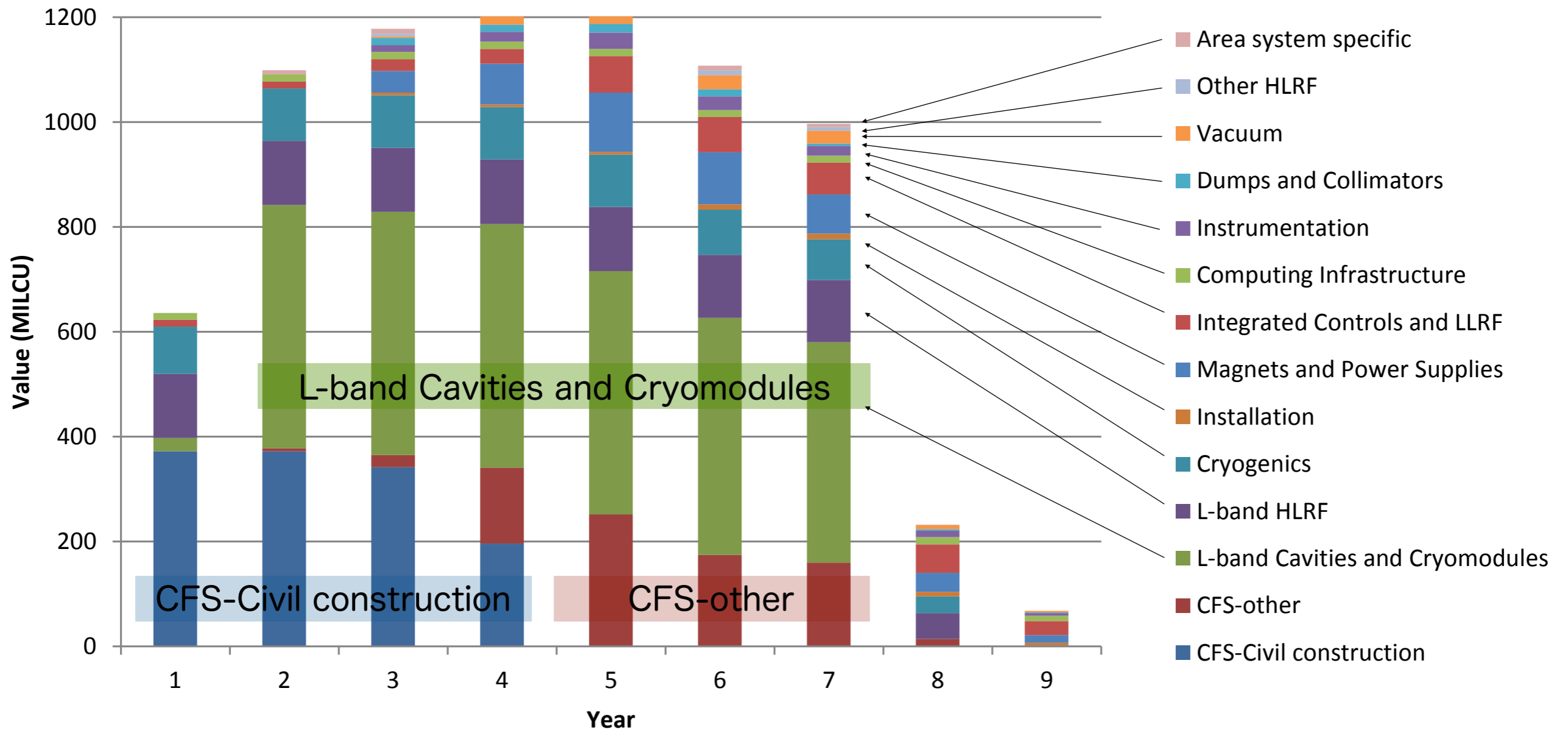


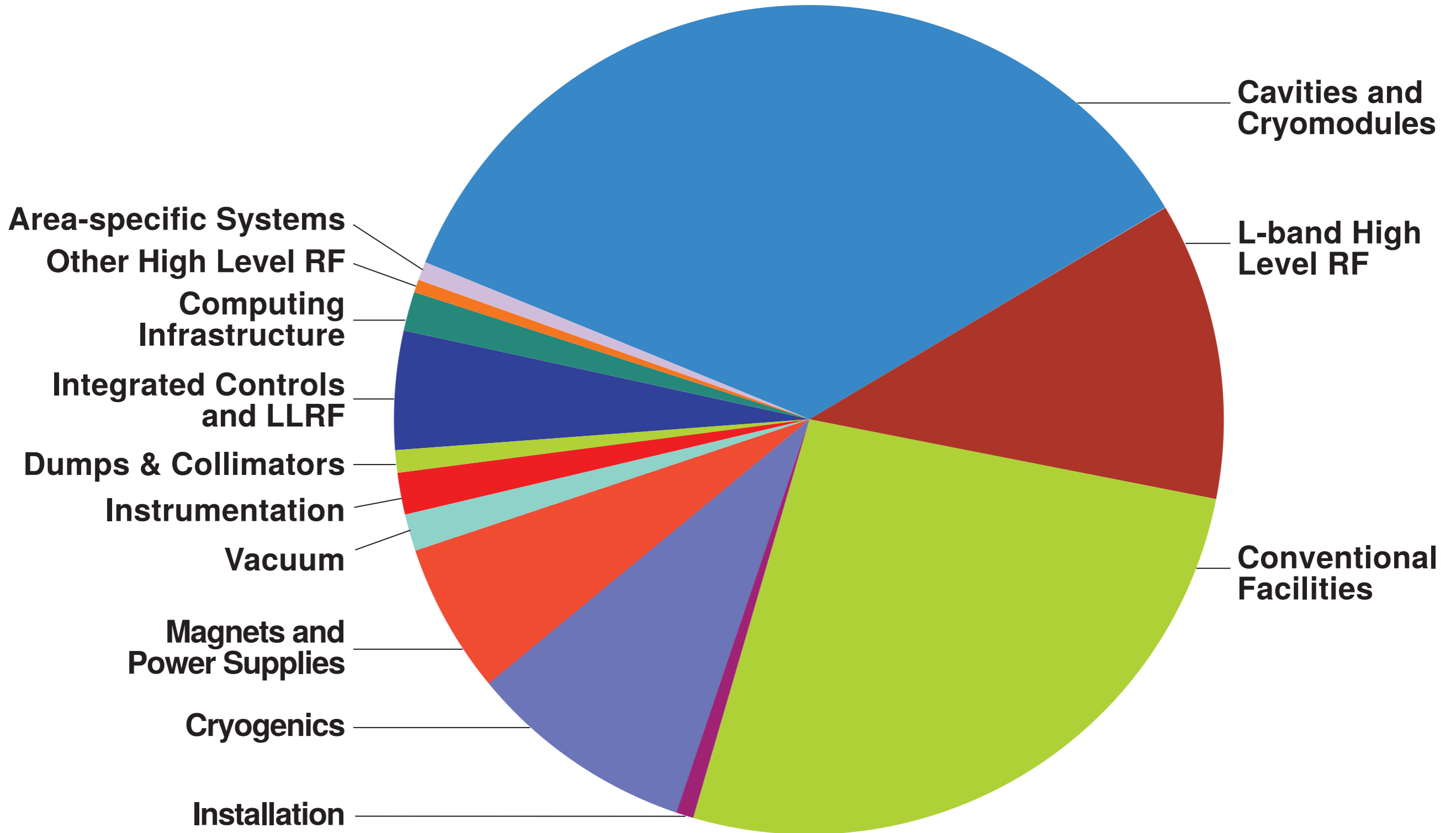
Figure 15.13. Value profile vs. project year. broken down by technical system.

Average over three regions : total value estimation = 7.8 billion ILCU

The overall relative Value premium for the total ILC TDR Value estimate is 26%.

# ILC-TDR

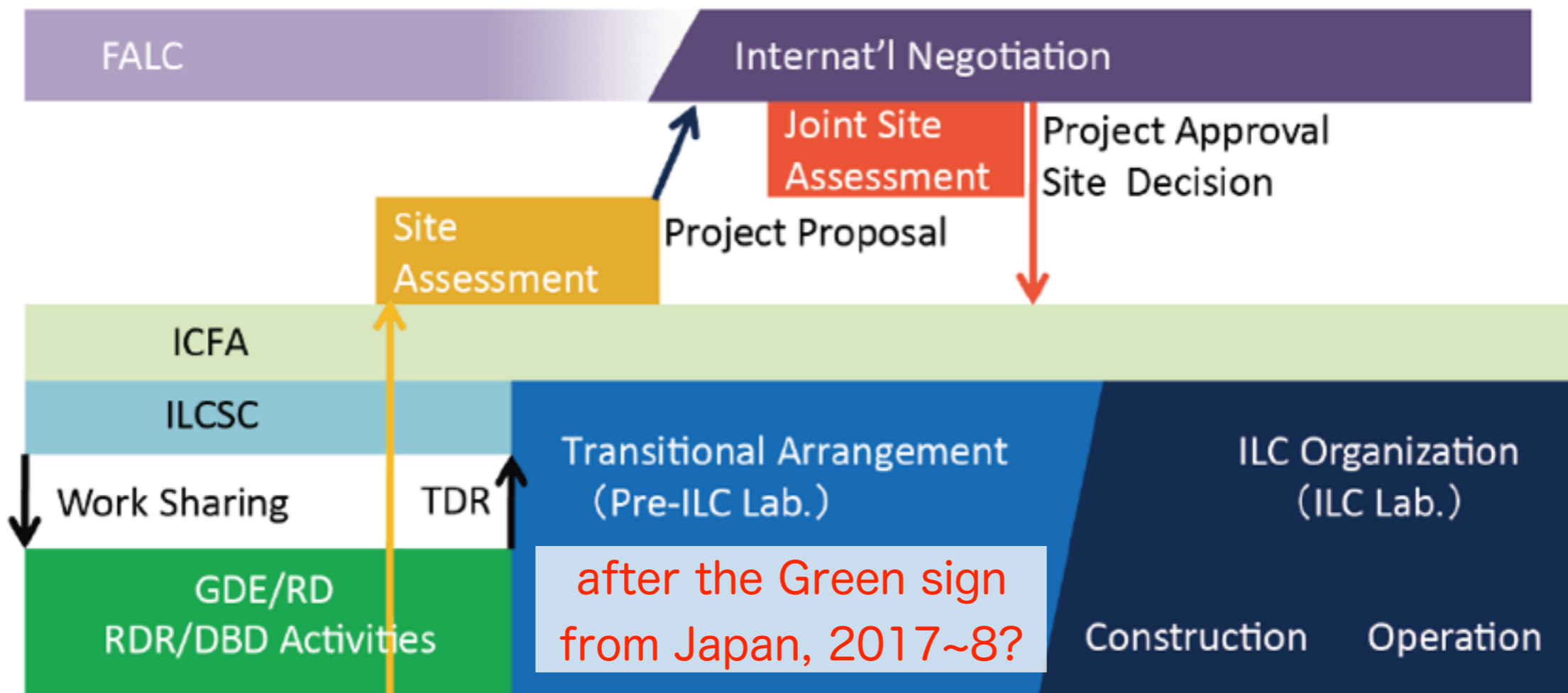
# Value estimation





# Project Implementation Planning

## Possible Roadmap to an ILC

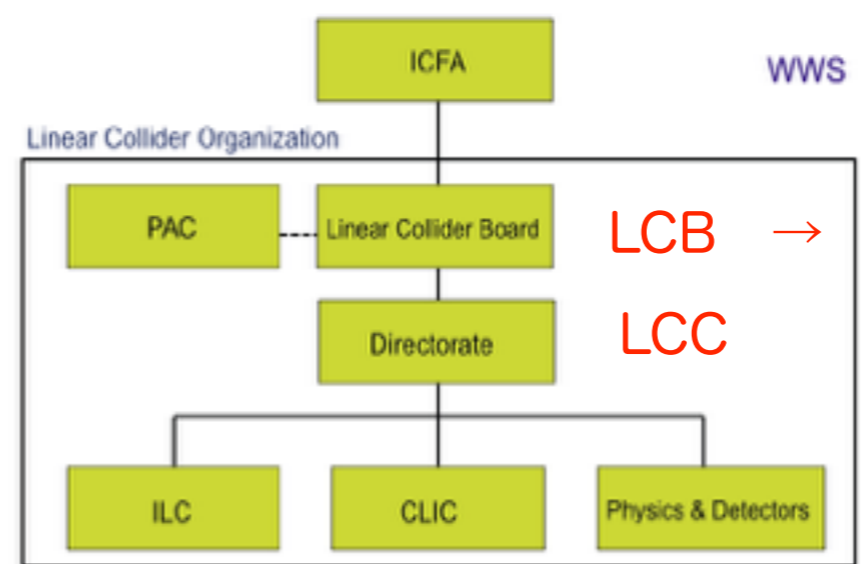


Site-dependent design

2012

ILCSC →

### Possible Organization



LCB →

Council of the ILC Lab.

LCC

# Summary

ILC is the most powerful machine and experiment for the high energy physics.

Recent years must be very interesting to see signals of the beyond the Standard model, especially from the LHC at the center of mass energy 14TeV.

This year, 2017, will be critical for realization of the ILC.

We are looking forward to seeing “the green sign” by our Japanese government.